

## BCL2 Monoclonal antibody

**Cat:** B02005R

**Company:** Haokebio

**Uniprot ID:** P10415

**Applications:** IHC:1:50-1:200

**Organism:** Mouse

IHC-Polymer:1:200-1:800

**Species reactivity:** Human Mouse Rat

IHC-TSA:1:250-1:1000

**Molecular Weight Calculation:** 26 kDa

WB : 1:1000

**Observed Molecular Weight:** 26 kDa

### Background:

Bcl-2 (B-cell lymphoma 2) is an outer mitochondrial membrane protein that via heterodimerization with BAX proteins controls apoptosis. Abnormalities of Bcl-2 activity can lead to cancer, autoimmune diseases, and schizophrenia.

at Anti-Rabbit & Mouse Universal Secondary Antibody, RT, 1h.

### Protein full name:

B-cell CLL/lymphoma 2

### Synonyms:

BCL2, BCL-2

### Immunogen:

Recombinant protein

### Isotype:

IgG1

### Subcellular location:

Cytoplasm

### Purity:

Affinity purification

### Form:

Liquid

### Storage Buffer:

PBS with 0.02% sodium azide, 100 µg/ml BSA and 50% glycerol.

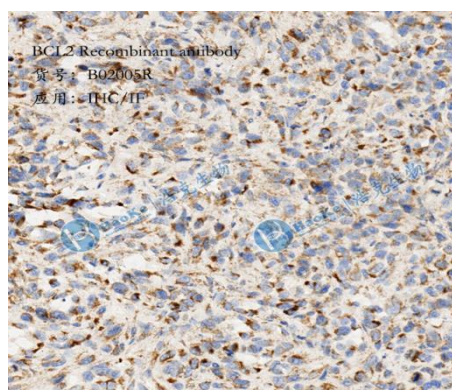
### Storage:

Store at -20 °C for one year.

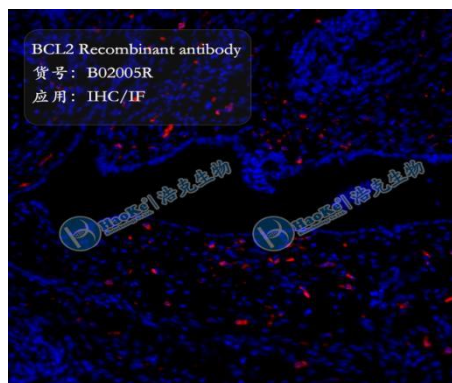
### Experimental procedure:

Antigen retrieval: Citrate buffer (pH 6.0), Medium high heat for 8 minutes, stop for 7 minutes, medium high heat for 8 minutes. Incubate antibody, 4°C overnight. Secondary antibody: Poly-HRP Goat

### Images:



Sample: Mouse tumor, 4% PFA 12-24h



Sample: Mouse tumor, 4% PFA 12-24h

### Source of Reagents:

发表[中文论文]请标注:BCL2(B02005R)由杭州浩克生物技术有限公司提供;

发表[英文论文]请标注:BCL2(B02005R) were kindly provided by Hangzhou Haoke Biotechnology Co., Ltd.