

TFE3 Recombinant antibody

Cat:B32136R

Company: Haokebio

Uniprot ID:P19532

Applications: IHC:1:100-1:200

Organism:Rabbit

IHC-Polymer:1:400-1:800

Species reactivity:Human

TSA:1:500-1:1000

Background:

Transcription Factor E3 (TFE3) is a member of the basic helix-loop-helix-leucine zipper (bHLH-LZ) family of transcription factors. The TFE3 gene is located on the short arm of the X chromosome, is expressed in various cells of the human body, and is involved in the regulation of a variety of genes. Rearrangement of this gene is associated with the development of multiple tumors. It is highly expressed in alveolar soft part sarcoma with TFE3 fusion gene and Xp11.2 translocation/TFE3 gene fusion-associated renal cell carcinoma, and is positively expressed in perivascular epithelioid cell tumors (PEComas).

Protein full name:

transcription factor binding to IGHM enhancer 3

Synonyms:

bHLHe33, RCCP2, TFE3, TFEA, Transcription factor E3

Immunogen:

Peptide

Isotype:

IgG

Subcellular location:

Nucleus

Purity:

Affinity purification

Form:

Liquid

Storage Buffer:

PBS with 0.02% sodium azide, 100 µg/ml BSA and 50% glycerol.

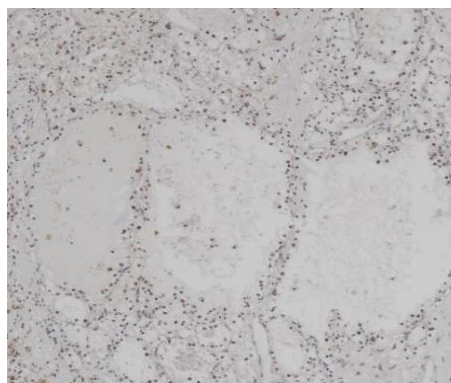
Storage:

Store at -20 °C for one year.

Experimental procedure:

Antigen retrieval: Citrate buffer (pH 9.0), Medium high heat for 8 minutes, stop for 7 minutes, medium high heat for 8 minutes. Incubate antibody, 4°C overnight. Secondary antibody: Poly-HRP Goat Anti-Rabbit & Mouse Universal Secondary Antibody, RT, 1h.

Images:



Sample: Human renal cell carcinoma tissue, 4% PFA 12-24h

Source of Reagents:

发表[中文论文]请标注:TFE3(B32136R)由杭州浩克生物技术有限公司提供;

发表[英文论文]请标注:TFE3(B32136R) were kindly provided by Hangzhou Haoke Biotechnology Co., Ltd.