

Bcl-6 Recombinant antibody

Cat:B32150R

Company: Haokebio

Uniprot ID:P41182

Applications: IHC:1:100-1:200

Organism:Rabbit

IHC-Polymer:1:400-1:800

Species reactivity:Human

TSA:1:500-1:1000

Background:

Bcl-6 is a transcriptional regulatory gene that encodes a 706-amino-acid nuclear zinc finger protein. The mitogen-activated protein kinases Erk1 and Erk2, but not JNK, phosphorylate BCL6 at multiple sites. Phosphorylation of BCL6 at Ser333 and Ser343 leads to the degradation of BCL6 in B cells via the ubiquitin/proteasome pathway. Additionally, BCL6 is acetylated, and its transcriptional repressor function is inhibited by the transcriptional coactivator p300. Antibodies against this protein stain germinal center cells of lymphoid follicles, follicular lymphoma cells, diffuse large B-cell lymphoma cells, follicular and interfollicular cells of Burkitt lymphoma, as well as most Reed-Sternberg cells in nodular lymphocyte-predominant Hodgkin lymphoma.

Protein full name:

B-cell CLL/lymphoma 6

Synonyms:

BCL-6, 3K6, B cell CLL/lymphoma 6, B cell lymphoma 6 protein, B-cell lymphoma 5 protein

Immunogen:

Peptide

Isotype:

IgG

Subcellular location:

Nucleus

Purity:

Affinity purification

Form:

Liquid

Storage Buffer:

PBS with 0.02% sodium azide, 100 µg/ml BSA and 50% glycerol.

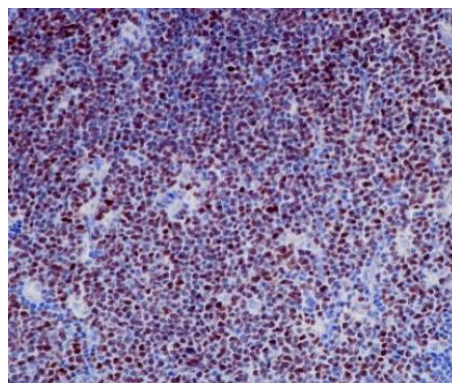
Storage:

Store at -20 °C for one year.

Experimental procedure:

Antigen retrieval: Citrate buffer (pH 9.0), Medium high heat for 8 minutes, stop for 7 minutes, medium high heat for 8 minutes. Incubate antibody, 4°C overnight. Secondary antibody: Poly-HRP Goat Anti-Rabbit & Mouse Universal Secondary Antibody, RT, 1h.

Images:



Sample: Human Diffuse large B-cell lymphoma tissue, 4% PFA 12-24h

Source of Reagents:

发表[中文论文]请标注:Bcl-6(B32150R)由杭州浩克生物技术有限公司提供;

发表[英文论文]请标注:Bcl-6(B32150R) were kindly provided by Hangzhou Haoke Biotechnology Co., Ltd.