

## Bcl-6 Recombinant antibody

**Cat:**B32169R

**Company:** Haokebio

**Uniprot ID:**P41182

**Applications:** IHC:1:100-1:200

**Organism:**Rabbit

IHC-Polymer:1:400-1:800

**Species reactivity:**Human

TSA:1:500-1:1000

### Background:

Bcl-6 is a proto-oncogene protein of the Kruppel-type zinc finger family with a molecular weight of 95 kDa, and it has the function of inducing cell apoptosis. Bcl-6 is mainly expressed in normal germinal center B cells and related lymphomas. Studies have shown that in non-Hodgkin's lymphoma, the Bcl-6 proto-oncogene is involved in gene rearrangement at chromosome 3q27, and Bcl-6 gene rearrangement has also been detected in 33-45% of diffuse large B-cell lymphomas. It has been reported that the Bcl-6 gene product can be detected by immunohistochemical staining in follicular lymphoma, diffuse large B-cell lymphoma, Burkitt lymphoma, and nodular lymphocyte-predominant Hodgkin's disease.

### Protein full name:

B-cell CLL/lymphoma 6

### Synonyms:

BCL-6, 3K6, B cell CLL/lymphoma 6, B cell lymphoma 6 protein, B-cell lymphoma 5 protein

### Immunogen:

Peptide

### Isotype:

IgG

### Subcellular location:

Nucleus

### Purity:

Affinity purification

### Form:

Liquid

### Storage Buffer:

PBS with 0.02% sodium azide, 100 µg/ml BSA and 50% glycerol.

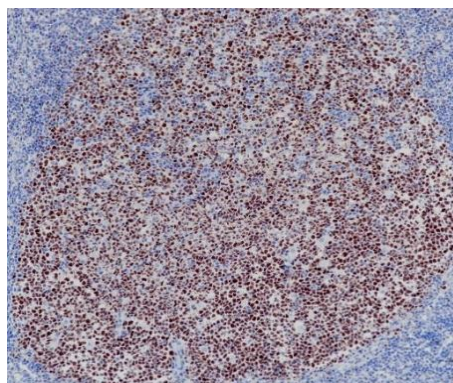
### Storage:

Store at -20 °C for one year.

### Experimental procedure:

Antigen retrieval: Citrate buffer (pH 9.0), Medium high heat for 8 minutes, stop for 7 minutes, medium high heat for 8 minutes. Incubate antibody, 4°C overnight. Secondary antibody: Poly-HRP Goat Anti-Rabbit & Mouse Universal Secondary Antibody, RT, 1h.

### Images:



Sample: Human tonsil tissue, 4% PFA 12-24h

### Source of Reagents:

发表[中文论文]请标注:Bcl-6(B32169R)由杭州浩克生物技术有限公司提供;

发表[英文论文]请标注:Bcl-6(B32169R) were kindly provided by Hangzhou Haoke Biotechnology Co., Ltd.