

PSMA Recombinant antibody

Cat:B32175R

Company: Haokebio

Uniprot ID:Q04609

Applications: IHC:1:100-1:200

Organism:Rabbit

IHC-Polymer:1:400-1:800

Species reactivity:Human

TSA:1:500-1:1000

Background:

Prostate-Specific Membrane Antigen (PSMA) is a type II transmembrane protein belonging to the M28 family. It was first identified in the LNCaP cell line, which is derived from lymph node metastases of prostate cancer. Studies have shown that PSMA is a well-established marker for prostate cancer and is also expressed in tissues such as the kidneys, liver, and bladder. PSMA is used as a diagnostic and prognostic indicator for prostate cancer, and may also serve as a marker for various neurological disorders including schizophrenia and Alzheimer's disease.

Protein full name:

folate hydrolase (prostate-specific membrane antigen) 1

Synonyms:

FOLH1, PSMA, Cell growth-inhibiting gene 27 protein, EC:3.4.17.21, FGCP

Immunogen:

Peptide

Isotype:

IgG

Subcellular location:

Cytoplasm, Cell membrane

Purity:

Affinity purification

Form:

Liquid

Storage Buffer:

PBS with 0.02% sodium azide, 100 µg/ml BSA and 50% glycerol.

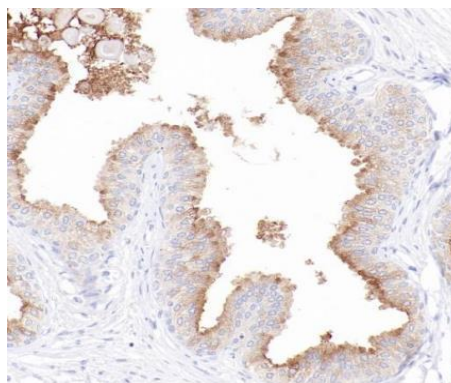
Storage:

Store at -20 °C for one year.

Experimental procedure:

Antigen retrieval: Citrate buffer (pH 9.0) , Medium high heat for 8 minutes, stop for 7 minutes, medium high heat for 8 minutes. Incubate antibody, 4°C overnight. Secondary antibody: Poly-HRP Goat Anti-Rabbit & Mouse Universal Secondary Antibody, RT, 1h.

Images:



Sample: Human prostate tissue, 4% PFA 12-24h

Source of Reagents:

发表[中文论文]请标注:PSMA(B32175R)由杭州浩克生物技术有限公司提供;

发表[英文论文]请标注:PSMA(B32175R) were kindly provided by Hangzhou Haoke Biotechnology Co., Ltd.