

ACE Recombinant antibody

Cat:B36122S

Company: HaoKebio

Uniprot ID:P12821-1

Applications: IHC:1:500-1:2000

Organism:Rabbit

IHC-Polymer:1:2000-1:8000

Species reactivity:Human Mouse Rat

IHC-TSA:1:2500-1:10000

Molecular Weight Calculation: 150 kDa

IF:1:50-1:100

Observed Molecular Weight: 170-180 kDa

WB:1:2000-1:10000

Background:

ACE(Angiotensin-converting enzyme) is also named as DCP, DCP1 and belongs to the peptidase M2 family. It is involved in catalyzing the conversion of angiotensin I into a physiologically active peptide angiotensin II. ACE also has a glycosidase activity which releases GPI-anchored proteins from the membrane by cleaving the mannose linkage in the GPI moiety. It has 4 isoforms produced by alternative splicing. The full length protein has 15 glycosylation sites and it can show a molecular weight of 170 kDa.

Synonyms:

241763E3, ACE1, Angiotensin converting enzyme, Angiotensin-converting enzyme, Angiotensin-converting enzyme, soluble form

Immunogen:

Recombinant protein

Isotype:

IgG

Subcellular location:

Membrane,Cytoplasm

Purity:

Affinity purification

Form:

Liquid

Storage Buffer:

PBS with 0.02%sodium azide,100 µg/ml BSA and 50% glycerol.

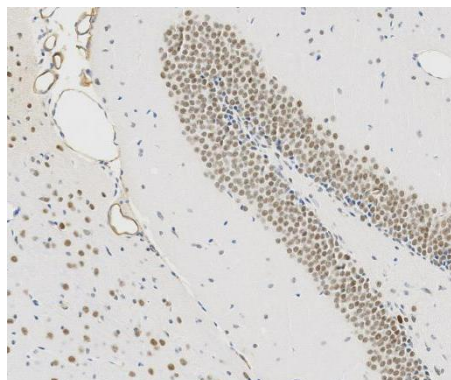
Storage:

Store at -20 °C for one year.

Experimental procedure:

Antigen retrieval: Citrate buffer (pH 9.0) , Medium high heat for 8 minutes, stop for 7 minutes, medium high heat for 8 minutes.Incubate antibody, 4°C overnight.Secondary antibody: Poly-HRP Goat Anti-Rabbit & Mouse Universal Secondary Antibody, RT, 1h.

Images:



Sample: Mouse brain, 4% PFA 12-24h

Source of Reagents:

发表[中文论文]请标注:ACE(B36122S)由杭州浩克生物技术有限公司提供;

发表[英文论文]请标注:ACE(B36122S) were kindly provided by Hangzhou Haoke Biotechnology Co., Ltd.