

MCL1 Recombinant antibody

Cat:B36168S

Company: HaoKebio

Uniprot ID:Q07820

Applications: IHC:1:50-1:500

Organism:Rabbit

IHC-Polymer:1:200-1:2000

Species reactivity:Human Mouse Rat

IHC-TSA:1:250-1:2500

Molecular Weight Calculation: 350 aa, 37 kDa

WB:1:2000-1:10000

Observed Molecular Weight: 40 kDa

Background:

MCL-1 is an anti-apoptotic member of the Bcl-2 family originally isolated from the ML-1 human myeloid leukemia cell line. Similar to BCL2 and BCL2L1, MCL1 can interact with BAX and/or BAK1 to inhibit mitochondria-mediated apoptosis. Mcl-1 is critical for the proliferation and survival of myeloma cells in vitro, and overexpression of Mcl-1 protein in myeloma cells is associated with relapse and short event-free survival in multiple myeloma patients. Recent studies show that MCL-1 is upregulated in numerous haematological and solid tumour malignancies. Therefore, MCL-1 has been suggested as a potential new therapeutic target. MCL-1 can be alternatively spliced into a long form (MCL-1L, 40 kDa) or a short form (MCL-1S, 30 kDa).

Synonyms:

1C7, Bcl2-L-3, Bcl-2-like protein 3, Bcl-2-related protein EAT/mcl1, EAT

Immunogen:

Recombinant protein

Isotype:

IgG

Subcellular location:

Cytoplasm

Purity:

Affinity purification

Form:

Liquid

Storage Buffer:

PBS with 0.02% sodium azide, 100 µg/ml BSA and 50% glycerol.

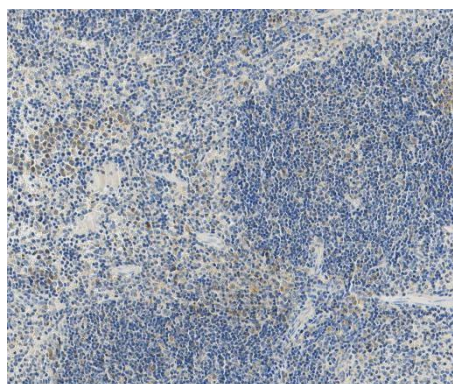
Storage:

Store at -20 °C for one year.

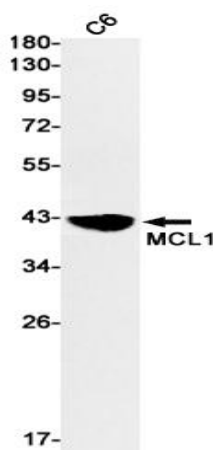
Experimental procedure:

Antigen retrieval: Citrate buffer (pH 9.0), Medium high heat for 8 minutes, stop for 7 minutes, medium high heat for 8 minutes. Incubate antibody, 4°C overnight. Secondary antibody: Poly-HRP Goat Anti-Rabbit & Mouse Universal Secondary Antibody, RT, 1h.

Images:



Sample: Mouse tumor, 4% PFA 12-24h



Dilution of 1:10000 incubated at room temperature for 1.5 hours.

Source of Reagents:

发表[中文论文]请标注:MCL1(B36168S)由杭州
浩克生物技术有限公司提供;

发表[英文论文]请标注:MCL1(B36168S) were k
indly provided by Hangzhou Haoke Biotechnolo
gy Co., Ltd.