

## PSMD1 Recombinant antibody

**Cat:**B36185S

**Company:** HaoKebio

**Uniprot ID:**Q99460

**Applications:** IHC:1:50-1:500

**Organism:**Rabbit

IHC-Polymer:1:200-1:2000

**Species reactivity:**Human Mouse Rat

IHC-TSA:1:250-1:2500

**Molecular Weight Calculation:** 953 aa, 106 kDa

WB:1:2000-1:10000

**Observed Molecular Weight:** 106 kDa

FC:1:200-1:600

### Background:

PSMD1 is a component of the 26S proteasome and contributes to its function regulation. PSMD1 performs an important role in the regulation of numerous cellular processes through the degradation of proteins targeted for breakdown through ubiquitin. PSMD1 has been found to be closely related to a variety of cancers such as lung adenocarcinoma and breast cancer.

### Synonyms:

240458B3, 26S proteasome non-ATPase regulatory subunit 1, PSMD 1

### Immunogen:

Recombinant protein

### Isotype:

IgG

### Subcellular location:

Cytoplasm

### Purity:

Affinity purification

### Form:

Liquid

### Storage Buffer:

PBS with 0.02% sodium azide, 100 µg/ml BSA and 50% glycerol.

### Storage:

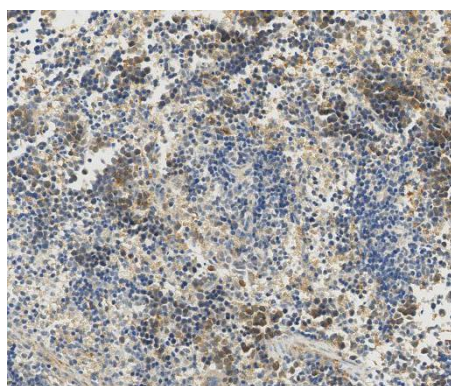
Store at -20 °C for one year.

### Experimental procedure:

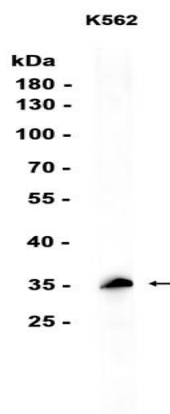
Antigen retrieval: Citrate buffer (pH 9.0), Medium high heat for 8 minutes, stop for 7 minutes, medium high heat for 8 minutes. Incubate antibody,

4°C overnight. Secondary antibody: Poly-HRP Goat Anti-Rabbit & Mouse Universal Secondary Antibody, RT, 1h.

### Images:



Sample: Mouse tumor, 4% PFA 12-24h



Dilution of 1:10000 incubated at room temperature for 1.5 hours.

### Source of Reagents:

发表[中文论文]请标注:PSMD1(B36185S)由杭州浩克生物技术有限公司提供;

发表[英文论文]请标注:PSMD1(B36185S) were kindly provided by Hangzhou Haoke Biotechnology Co., Ltd.