

Laminin Recombinant antibody

Cat: B35059D

Company: HaoKebio

Uniprot ID: Q9R0B6

Applications: IHC:1:200-1:500

Organism: Rabbit

IHC-Polymer:1:800-1:2000

Species reactivity: Mouse

IHC-TSA:1:1000-1:2500

Molecular Weight Calculation: 172 kDa

WB:1:1000

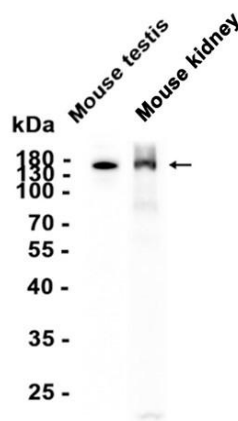
Observed Molecular Weight: 172 kDa

Background:

Binding to cells via a high affinity receptor, laminin is thought to mediate the attachment, migration and organization of cells into tissues during embryonic development by interacting with other extracellular matrix components

4°C overnight. Secondary antibody: Poly-HRP Goat Anti-Rabbit & Mouse Universal Secondary Antibody, RT, 1h.

Images:



Protein full name:

Laminin

Synonyms:

AI562206; AW240805; 1110064A23Rik

Immunogen:

Recombinant protein

Isotype:

IgG

Dilution of 1:1000 incubated at room temperature for 1.5 hours.

Subcellular location:

Basement membrane

Purity:

Affinity purification

Form:

Liquid

Storage Buffer:

PBS with 0.02% sodium azide, 100 µg/ml BSA and 50% glycerol.

Storage:

Store at -20 °C for one year.

Experimental procedure:

Antigen retrieval: Citrate buffer (pH 9.0), Medium high heat for 8 minutes, stop for 7 minutes, medium high heat for 8 minutes. Incubate antibody,

Source of Reagents:

发表[中文论文]请标注:Laminin(B35059D)由杭州浩克生物技术有限公司提供;

发表[英文论文]请标注:Laminin(B35059D) were kindly provided by Hangzhou Haoke Biotechnology Co., Ltd.