

BIN1 Recombinant antibody

Cat: B35068D

Company: HaoKebio

Uniprot ID: O00499

Applications: IHC:1:100-1:500

Organism: Rabbit

IHC-Polymer:1:400-1:2000

Species reactivity: Human

IHC-TSA:1:500-1:2500

Molecular Weight Calculation: 65 kDa

WB:1:1000-1:5000

Observed Molecular Weight: 45-80 kDa

Background:

This gene encodes several isoforms of a nucleocytoplasmic adaptor protein, one of which was initially identified as a MYC-interacting protein with features of a tumor suppressor. Isoforms that are expressed in the central nervous system may be involved in synaptic vesicle endocytosis and may interact with dynamin, synaptojanin, endophilin, and clathrin. Isoforms that are expressed in muscle and ubiquitously expressed isoforms localize to the cytoplasm and nucleus and activate a caspase-independent apoptotic process. Studies in mouse suggest that this gene plays an important role in cardiac muscle development. Alternate splicing of the gene results in several transcript variants encoding different isoforms. Aberrant splice variants expressed in tumor cell lines have also been described.

Protein full name:

Bridging Integrator 1

Synonyms:

CNM2; AMPH2; AMPHL; SH3P9

Immunogen:

Recombinant protein

Isotype:

IgG

Subcellular location:

Cytoplasm, Nucleus

Purity:

Affinity purification

Form:

Liquid

Storage Buffer:

PBS with 0.02% sodium azide, 100 µg/ml BSA and 50% glycerol.

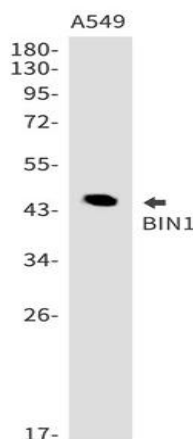
Storage:

Store at -20 °C for one year.

Experimental procedure:

Antigen retrieval: Citrate buffer (pH 9.0), Medium high heat for 8 minutes, stop for 7 minutes, medium high heat for 8 minutes. Incubate antibody, 4°C overnight. Secondary antibody: Poly-HRP Goat Anti-Rabbit & Mouse Universal Secondary Antibody, RT, 1h.

Images:



Dilution of 1:5000 incubated at room temperature for 1.5 hours.

Source of Reagents:

发表[中文论文]请标注:BIN1(B35068D)由杭州浩克生物技术有限公司提供;

发表[英文论文]请标注:BIN1(B35068D) were kindly provided by Hangzhou Haoke Biotechnology Co., Ltd.