

Nucleolin Recombinant antibody

Cat:B35071D

Company: HaoKebio

Uniprot ID:P19338

Applications: IHC:1:200-1:500

Organism:Rabbit

IHC-Polymer:1:800-1:2000

Species reactivity:Human Mouse Rat

IHC-TSA:1:1000-1:2500

Molecular Weight Calculation: 77 kDa

WB:1:2000-1:20000

Observed Molecular Weight: 100 kDa

Background:

Nucleolin (NCL), a eukaryotic nucleolar phosphoprotein, is involved in the synthesis and maturation of ribosomes. It is located mainly in dense fibrillar regions of the nucleolus. Human NCL gene consists of 14 exons with 13 introns and spans approximately 11kb. The intron 11 of the NCL gene encodes a small nucleolar RNA, termed U20.

Protein full name:

Nucleolin

Synonyms:

C23; Nsr1

Immunogen:

Recombinant protein

Isotype:

IgG

Subcellular location:

Nucleus

Purity:

Affinity purification

Form:

Liquid

Storage Buffer:

PBS with 0.02% sodium azide, 100 µg/ml BSA and 50% glycerol.

Storage:

Store at -20 °C for one year.

Experimental procedure:

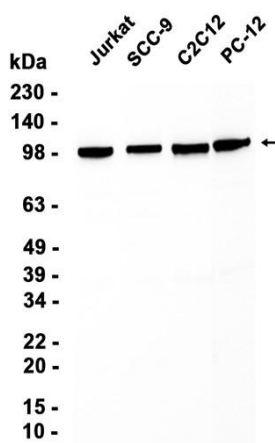
Antigen retrieval: Citrate buffer (pH 9.0), Medium high heat for 8 minutes, stop for 7 minutes, medium

high heat for 8 minutes. Incubate antibody, 4°C overnight.

Secondary antibody: Poly-HRP Goat Anti-Rabbit & Mouse

Universal Secondary Antibody, RT, 1h.

Images:



Dilution of 1:10000 incubated at room temperature for 1.5 hours.

Source of Reagents:

发表[中文论文]请标注:Nucleolin(B35071D)由杭州浩克生物技术有限公司提供;

发表[英文论文]请标注:Nucleolin(B35071D) were kindly provided by Hangzhou Haoke Biotechnology Co., Ltd.