

CHD1L Recombinant antibody

Cat: B35082D

Company: HaoKebio

Uniprot ID: Q86WJ1

Applications: IHC:1:100-1:200

Organism: Rabbit

IHC-Polymer:1:400-1:800

Species reactivity: Human Mouse

IHC-TSA:1:500-1:1000

Molecular Weight Calculation: 101 kDa

WB:1:1000-1:5000

Observed Molecular Weight: 110 kDa

Background:

This gene encodes a DNA helicase protein involved in DNA repair. The protein converts ATP to add poly(ADP-ribose) as it regulates chromatin relaxation following DNA damage. Overexpression of this gene has been linked to several types of cancers.

Synonyms:

ALC1; CHDL

Immunogen:

Recombinant protein

Isotype:

IgG

Subcellular location:

Nucleus

Purity:

Affinity purification

Form:

Liquid

Storage Buffer:

PBS with 0.02% sodium azide, 100 µg/ml BSA and 50% glycerol.

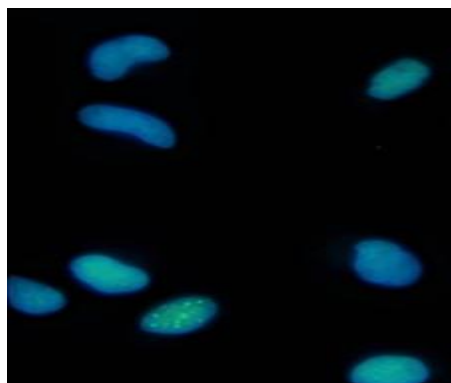
Storage:

Store at -20 °C for one year.

Experimental procedure:

Antigen retrieval: Citrate buffer (pH 9.0), Medium high heat for 8 minutes, stop for 7 minutes, medium high heat for 8 minutes. Incubate antibody, 4°C overnight. Secondary antibody: Poly-HRP Goat Anti-Rabbit & Mouse Universal Secondary Antibody, RT, 1h.

Images:



Sample: HeLa cells, 4% PFA 12-24h

Source of Reagents:

发表[中文论文]请标注:CHD1L(B35082D)由杭州浩克生物技术有限公司提供;

发表[英文论文]请标注:CHD1L(B35082D) were kindly provided by Hangzhou Haoke Biotechnology Co., Ltd.