

## LMAN1 Recombinant antibody

**Cat:**B35092D

**Company:** HaoKebio

**Uniprot ID:**P49257

**Applications:** IHC:1:200-1:500

**Organism:**Rabbit

IHC-Polymer:1:800-1:2000

**Species reactivity:**Human Mouse Rat

IHC-TSA:1:1000-1:2500

**Molecular Weight Calculation:** 58 kDa

WB:1:1000-1:5000

**Observed Molecular Weight:** 58 kDa

### Background:

The protein encoded by this gene is a membrane mannose-specific lectin that cycles between the endoplasmic reticulum, endoplasmic reticulum-Golgi intermediate compartment, and cis-Golgi, functioning as a cargo receptor for glycoprotein transport. The protein has an N-terminal signal sequence, a calcium-dependent and pH-sensitive carbohydrate recognition domain, a stalk region that functions in oligomerization, a transmembrane domain, and a short cytoplasmic domain required for organelle targeting. Allelic variants of this gene are associated with the autosomal recessive disorder combined factor V-factor VIII deficiency.

### Synonyms:

MR60; gp58; F5F8D; FMFD1; MCFD1; ERGIC53; ERGIC-53

### Immunogen:

Recombinant protein

### Isotype:

IgG

### Subcellular location:

Cytoplasm

### Purity:

Affinity purification

### Form:

Liquid

### Storage Buffer:

PBS with 0.02% sodium azide, 100 µg/ml BSA and 50% glycerol.

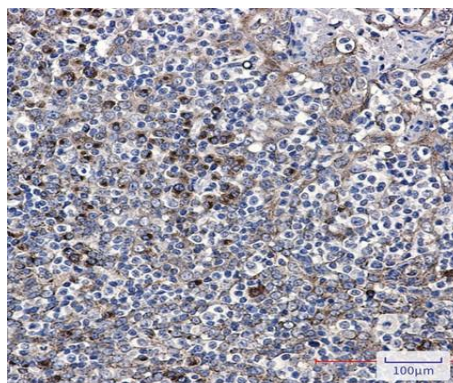
### Storage:

Store at -20 °C for one year.

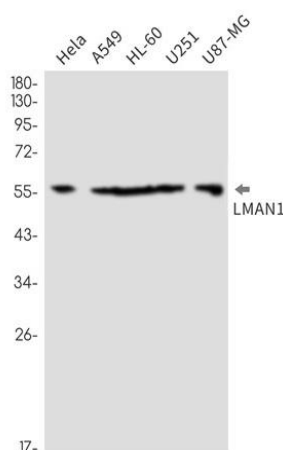
### Experimental procedure:

Antigen retrieval: Citrate buffer (pH 9.0) , Medium high heat for 8 minutes, stop for 7 minutes, medium high heat for 8 minutes. Incubate antibody, 4°C overnight. Secondary antibody: Poly-HRP Goat Anti-Rabbit & Mouse Universal Secondary Antibody, RT, 1h.

### Images:



Sample: human tonsil, 4% PFA 12-24h



Dilution of 1:5000 incubated at room temperature for 1.5 hours.

### Source of Reagents:

发表[中文论文]请标注:LMAN1(B35092D)由杭州浩克生物技术有限公司提供;

发表[英文论文]请标注:LMAN1(B35092D) were  
kindly provided by Hangzhou Haoke Biotechnology Co., Ltd.