

## Talin-1 Recombinant antibody

**Cat:**B36203S

**Company:** HaoKebio

**Uniprot ID:**Q9Y490

**Applications:** IHC:1:1000-1:4000

**Organism:**Rabbit

IHC-Polymer:1:4000-1:16000

**Species reactivity:**Human Mouse Rat

IHC-TSA:1:5000-1:20000

**Molecular Weight Calculation:** 2541 aa, 270 kDa

IF:1:50-1:200

**Observed Molecular Weight:** 270 kDa

WB:1:5000-1:50000

IP:1ug for 1mg of total protein lysate

### Background:

Talin-1 is a large cytoskeletal protein consisting of a globular head domain and a long rod comprised of a series of  $\alpha$ -helical bundles. Talin-1 is ubiquitously expressed and is a major component of focal adhesions which are multi-protein, integrin-containing complexes, mediating cell migration, adhesion and integrin signalling (PMID: 33431906). Talin-1 also plays a role in tumor formation, migration and metastasis in various malignancies (PMID: 37013489).

### Synonyms:

7D11, ILWEQ, KIAA1027, talin 1, talin1

### Immunogen:

Recombinant protein

### Isotype:

IgG

### Subcellular location:

Focal adhesions, Immunological synapse

### Purity:

Affinity purification

### Form:

Liquid

### Storage Buffer:

PBS with 0.02% sodium azide, 100  $\mu$ g/ml BSA and 50% glycerol.

### Storage:

Store at -20 °C for one year.

### Experimental procedure:

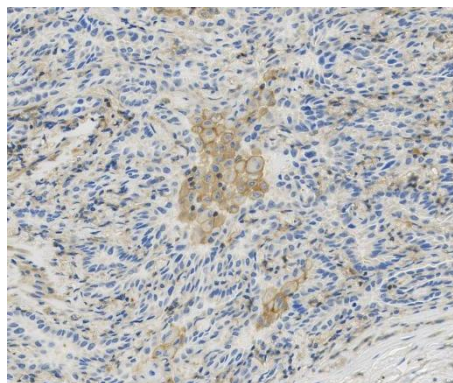
Antigen retrieval: Citrate buffer (pH 9.0), Medium high heat for 8 minutes, stop for 7 minutes, medium

high heat for 8 minutes. Incubate antibody, 4°C overnight.

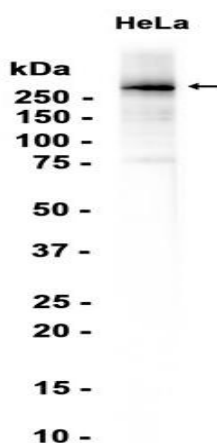
Secondary antibody: Poly-HRP Goat Anti-Rabbit & Mouse

Universal Secondary Antibody, RT, 1h.

### Images:



Sample: Mouse spleen, 4% PFA 12-24h



Dilution of 1:50000 incubated at room temperature for 1.5 hours.

### Source of Reagents:

发表[中文论文]请标注:Talin-1(B36203S)由杭州浩克生物技术有限公司提供;

发表[英文论文]请标注:Talin-1(B36203S) were kindly provided by Hangzhou Haoke Biotechnology Co., Ltd.



