

TIM23 Recombinant antibody

Cat: B36204S

Company: HaoKebio

Uniprot ID: O14925

Applications: IHC:1:50-1:500

Organism: Rabbit

IHC-Polymer:1:200-1:2000

Species reactivity: Human Mouse Rat

IHC-TSA:1:250-1:2500

Molecular Weight Calculation: 22 kDa

WB:1:2000-1:10000

Observed Molecular Weight: 22 kDa

IP:1ug for 1mg of total protein lysate

Background:

Tim23, a key component of the mitochondrial preprotein translocase, is anchored in the inner membrane by its C-terminal domain and exposes an intermediate domain in the intermembrane space that functions as a presequence receptor. Tim23 is the main component of the translocation channel of the TIM23 complex.

Synonyms:

TIMM23, 1H16, Mitochondrial import inner membrane translocase subunit Tim23, TIMM 23

Immunogen:

Recombinant protein

Isotype:

IgG

Subcellular location:

Cytoplasm

Purity:

Affinity purification

Form:

Liquid

Storage Buffer:

PBS with 0.02% sodium azide, 100 µg/ml BSA and 50% glycerol.

Storage:

Store at -20 °C for one year.

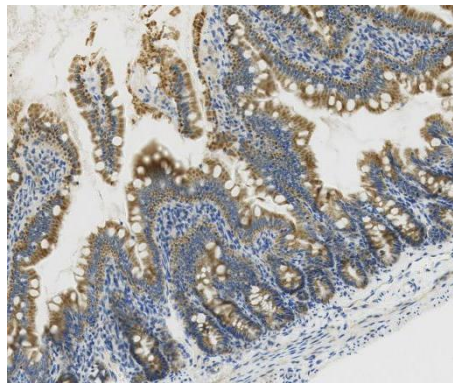
Experimental procedure:

Antigen retrieval: Citrate buffer (pH 9.0), Medium high heat for 8 minutes, stop for 7 minutes, medium

high heat for 8 minutes. Incubate antibody, 4°C overnight.

Secondary antibody: Poly-HRP Goat Anti-Rabbit & Mouse Universal Secondary Antibody, RT, 1h.

Images:



Sample: Mouse intestine, 4% PFA 12-24h

Source of Reagents:

发表[中文论文]请标注:TIM23(B36204S)由杭州浩克生物技术有限公司提供;

发表[英文论文]请标注:TIM23(B36204S) were kindly provided by Hangzhou Haoke Biotechnology Co., Ltd.