

## YTHDC2 Recombinant antibody

**Cat:**B36207S

**Company:** HaoKebio

**Uniprot ID:**Q9H6S0

**Applications:** IHC:1:50-1:500

**Organism:**Rabbit

IHC-Polymer:1:200-1:2000

**Species reactivity:**Human Mouse

IHC-TSA:1:250-1:2500

**Molecular Weight Calculation:** 135-140 kDa

WB:1:5000-1:50000

**Observed Molecular Weight:** 160 kDa

FC:1:200-1:600

### Background:

YTHDC2, also named as Probable ATP-dependent RNA helicase YTHDC2, is a 1430 amino acid protein, which belongs to the DEAD box helicase family. YTHDC2 specifically recognizes and binds N6-methyladenosine (m6A)-containing RNAs. M6A is a modification present at internal sites of mRNAs and some non-coding RNAs and plays a role in the efficiency of mRNA splicing, processing and stability.

### Synonyms:

241123A9, 3'-5' RNA helicase YTHDC2, EC:3.6.4.13, hYTHDC2, YTH domain-containing protein 2

### Immunogen:

Recombinant protein

### Isotype:

IgG

### Subcellular location:

Cytoplasm,Nucleus

### Purity:

Affinity purification

### Form:

Liquid

### Storage Buffer:

PBS with 0.02% sodium azide, 100 µg/ml BSA and 50% glycerol.

### Storage:

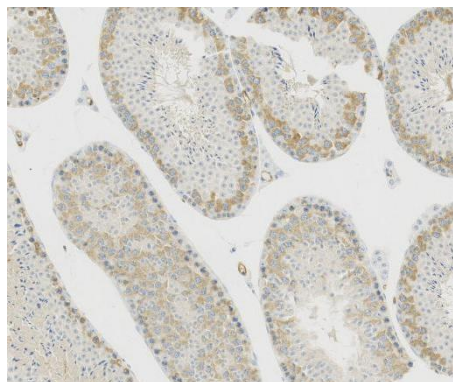
Store at -20 °C for one year.

### Experimental procedure:

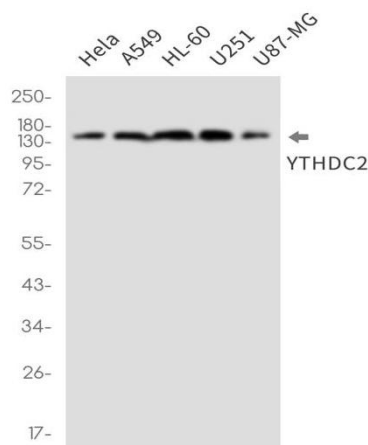
Antigen retrieval: Citrate buffer (pH 9.0), Medium high heat for 8 minutes, stop for 7 minutes, medium

high heat for 8 minutes. Incubate antibody, 4°C overnight. Secondary antibody: Poly-HRP Goat Anti-Rabbit & Mouse Universal Secondary Antibody, RT, 1h.

### Images:



Sample: Mouse testis, 4% PFA 12-24h



Dilution of 1:10000 incubated at room temperature for 1.5 hours.

### Source of Reagents:

发表[中文论文]请标注:YTHDC2(B36207S)由杭州浩克生物技术有限公司提供;

发表[英文论文]请标注:YTHDC2(B36207S) were kindly provided by Hangzhou Haoke Biotechnology Co., Ltd.

