

Complement factor B Recombinant antibody

Cat: B36224S

Company: HaoKebio

Uniprot ID: P00751

Applications: IHC:1:200-1:800

Organism: Rabbit

IHC-Polymer:1:800-1:3200

Species reactivity: Human Mouse Rat

IHC-TSA:1:1000-1:4000

Molecular Weight Calculation: 86 kDa

IF:1:50

Observed Molecular Weight: 93-100 kDa

WB:1:2000-1:10000

Background:

Complement factor B (CFB) is a component of the alternative pathway of complement activation.

Complement factor B is a 93-100 kDa glycoprotein and is cleaved into Ba (33 kDa) and Bb (60 kDa) by factor D in the presence of C3b (PMID: 11025450). The active subunit Bb is a serine protease that is associated with C3b and forms the alternative pathway for C3 convertase. Bb is involved in the proliferation of preactivated B lymphocytes, while Ba inhibits their proliferation.

Synonyms:

CFB, CFAB, C3/C5 convertase, BFD, BF

Immunogen:

Recombinant protein

Isotype:

IgG

Subcellular location:

Cytoplasm

Purity:

Affinity purification

Form:

Liquid

Storage Buffer:

PBS with 0.02% sodium azide, 100 µg/ml BSA and 50% glycerol.

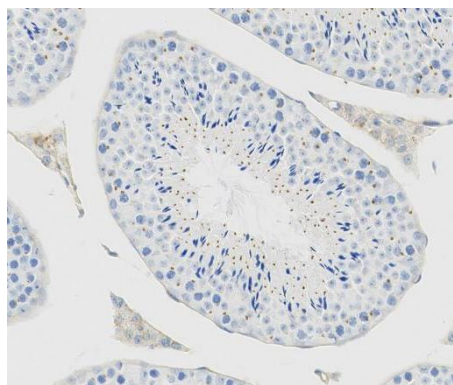
Storage:

Store at -20 °C for one year.

Experimental procedure:

Antigen retrieval: Citrate buffer (pH 9.0), Medium high heat for 8 minutes, stop for 7 minutes, medium high heat for 8 minutes. Incubate antibody, 4°C overnight. Secondary antibody: Poly-HRP Goat Anti-Rabbit & Mouse Universal Secondary Antibody, RT, 1h.

Images:



Sample: Mouse testis, 4% PFA 12-24h

Source of Reagents:

发表[中文论文]请标注: Complement factor B(B36224S)由杭州浩克生物技术有限公司提供;

发表[英文论文]请标注: Complement factor B(B36224S) were kindly provided by Hangzhou Haoke Biotechnology Co., Ltd.