

## AP1M1 Recombinant antibody

**Cat:**B36243S

**Company:** HaoKebio

**Uniprot ID:**Q9BXS5

**Applications:** IHC:1:500-1:2000

**Organism:**Rabbit

IHC-Polymer:1:2000-1:8000

**Species reactivity:**Human Mouse Rat

IHC-TSA:1:2500-1:10000

**Molecular Weight Calculation:** 423 aa, 49 kDa

IF:1:50-1:100

**Observed Molecular Weight:** 49 kDa

WB:1:5000-1:50000

FC:1:200-1:600

### Background:

Store at -20 °C for one year.

AP1M1, also named as CLTNM, Mu-adaptin 1 and Clathrin coat assembly protein AP47, belongs to the adaptor complexes medium subunit family. It is a subunit of clathrin-associated adaptor protein complex 1 that plays a role in protein sorting in the trans-Golgi network (TGN) and endosomes. The AP complexes mediate the recruitment of clathrin to membranes and the recognition of sorting signals within the cytosolic tails of transmembrane cargo molecules.

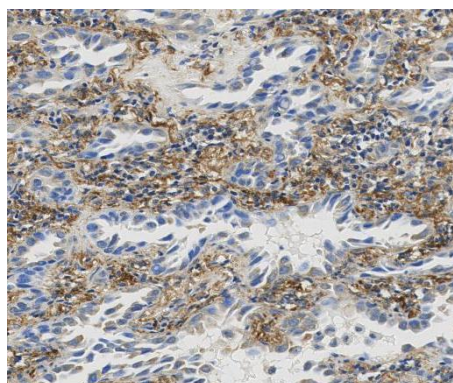
### Experimental procedure:

Antigen retrieval: Citrate buffer (pH 9.0) , Medium high heat for 8 minutes, stop for 7 minutes, medium high heat for 8 minutes. Incubate antibody, 4°C overnight. Secondary antibody: Poly-HRP Goat Anti-Rabbit & Mouse Universal Secondary Antibody, RT, 1h.

### Synonyms:

240553H3, Adaptor protein complex AP-1 subunit mu-1, Adaptor-related protein complex 1 subunit mu-1, AP 1 complex subunit mu 1, AP mu chain family member mu1A

### Images:



Sample: Mouse kidney, 4% PFA 12-24h

### Immunogen:

Recombinant protein

### Source of Reagents:

### Isotype:

IgG

发表[中文论文]请标注:AP1M1(B36243S)由杭州浩克生物技术有限公司提供;

### Subcellular location:

Cytoplasm

发表[英文论文]请标注:AP1M1(B36243S) were kindly provided by Hangzhou Haoke Biotechnology Co., Ltd.

### Purity:

Affinity purification

### Form:

Liquid

### Storage Buffer:

PBS with 0.02% sodium azide, 100 µg/ml BSA and 50% glycerol.

### Storage: