

## ATM Recombinant antibody

**Cat:**B36255S

**Company:** HaoKebio

**Uniprot ID:**Q13315

**Applications:** IHC:1:200-1:800

**Organism:**Rabbit

IHC-Polymer:1:800-1:3200

**Species reactivity:**Human Mouse

IHC-TSA:1:1000-1:4000

**Molecular Weight Calculation:** 350 kDa

IF:1:50

**Observed Molecular Weight:** 310-350 kDa

WB:1:5000-1:50000

FC:1:200-1:600

### Background:

The ATM protein is a member of the phosphatidylinositol 3-kinase family of proteins that respond to DNA damage by phosphorylating key substrates involved in DNA repair and/or cell cycle control. It is involved in mitogenic signal transduction, meiotic recombination, detection of DNA damage, and cell cycle control.

### Synonyms:

240560F5, A T mutated, A-T mutated, EC:2.7.11.1, Serine-protein kinase ATM

### Immunogen:

Recombinant protein

### Isotype:

IgG

### Subcellular location:

Nucleus

### Purity:

Affinity purification

### Form:

Liquid

### Storage Buffer:

PBS with 0.02% sodium azide, 100 µg/ml BSA and 50% glycerol.

### Storage:

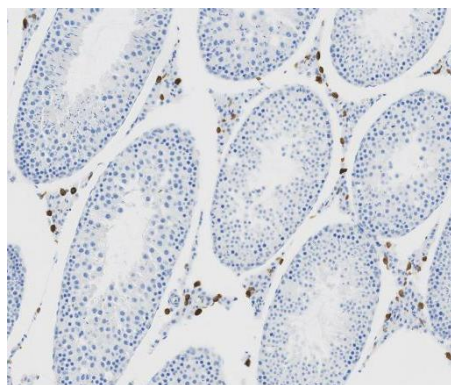
Store at -20 °C for one year.

### Experimental procedure:

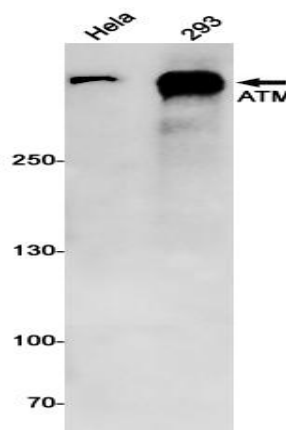
Antigen retrieval: Citrate buffer (pH 9.0), Medium high heat for 8 minutes, stop for 7 minutes, medium high heat for 8 minutes. Incubate antibody,

4°C overnight. Secondary antibody: Poly-HRP Goat Anti-Rabbit & Mouse Universal Secondary Antibody, RT, 1h.

### Images:



Sample: Mouse testis, 4% PFA 12-24h



Dilution of 1:10000 incubated at room temperature for 1.5 hours.

### Source of Reagents:

发表[中文论文]请标注:ATM(B36255S)由杭州浩克生物技术有限公司提供;

发表[英文论文]请标注:ATM(B36255S) were kindly provided by Hangzhou Haoke Biotechnology Co., Ltd.