

## BUB1B Recombinant antibody

**Cat:** B36257S

**Company:** HaoKebio

**Uniprot ID:** O60566

**Applications:** IHC:1:200-1:800

**Organism:** Rabbit

IHC-Polymer:1:800-1:3200

**Species reactivity:** Human Mouse

IHC-TSA:1:1000-1:4000

**Molecular Weight Calculation:** 1050 aa, 120 kDa

IF:1:50

**Observed Molecular Weight:** 130 kDa

WB:1:2000-1:10000

### Background:

BUB1B(Mitotic checkpoint serine/threonine-protein kinase BUB1 beta), also named as BUBR1, MAD3, and SSK1, belongs to the BUB1 subfamily. Human BUB1B is a 120 kDa protein that plays a central role in the spindle assembly checkpoint (SAC), the evolutionary conserved and self-regulatory system of higher organisms that monitors and repairs defects in chromosome segregation in mitotic cells. In addition to phosphorylation, BUB1B is also subjected to posttranslational modifications, including acetylation. Defects in BUB1B are the cause of the premature chromatid separation trait (PCS) and mosaic variegated aneuploidy syndrome type 1 (MVA1). Research has shown that a BUB1B isoform with a measured MW of about 65 kDa.

### Synonyms:

BubR1, 240969F7, Bub1A, BUB1beta, EC:2.7.1.1

### Immunogen:

Recombinant protein

### Isotype:

IgG

### Subcellular location:

Nucleus

### Purity:

Affinity purification

### Form:

Liquid

### Storage Buffer:

PBS with 0.02% sodium azide, 100 µg/ml BSA and 50% glycerol.

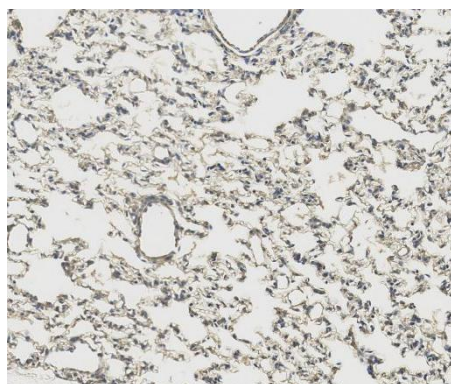
### Storage:

Store at -20 °C for one year.

### Experimental procedure:

Antigen retrieval: Citrate buffer (pH 9.0), Medium high heat for 8 minutes, stop for 7 minutes, medium high heat for 8 minutes. Incubate antibody, 4°C overnight. Secondary antibody: Poly-HRP Goat Anti-Rabbit & Mouse Universal Secondary Antibody, RT, 1h.

### Images:



Sample: Mouse lung, 4% PFA 12-24h

### Source of Reagents:

发表[中文论文]请标注:BUB1B(B36257S)由杭州浩克生物技术有限公司提供;

发表[英文论文]请标注:BUB1B(B36257S) were kindly provided by Hangzhou Haoke Biotechnology Co., Ltd.