

ATP1A2 Recombinant antibody

Cat: B36260S

Company: HaoKebio

Uniprot ID: P50993

Applications: IHC:1:200-1:800

Organism: Rabbit

IHC-Polymer:1:800-1:3200

Species reactivity: Human Mouse Rat

IHC-TSA:1:1000-1:4000

Molecular Weight Calculation: 1020 aa, 112 kDa

IF:1:50

Observed Molecular Weight: 97-100 kDa

WB:1:5000-1:50000

Background:

ATP1A2 (Na⁺/K⁺-ATPase α -2 subunit) is the catalytic component of the active enzyme Na⁺/K⁺-ATPase, which catalyzes the hydrolysis of ATP coupled with the exchange of sodium and potassium ions across the plasma membrane. The Na⁺/K⁺-ATPase is composed of a larger catalytic α -subunit (~110 kDa) and a small β -subunit (~55 kDa).

The α subunit has four isoforms identified to date: α 1, α 2, α 3 and α 4. The α 1 isoform is expressed ubiquitously but the α 2 isoform is present largely in the skeletal muscle, heart and vascular smooth muscle. The α 3 isoform is found almost exclusively in neurons and ovaries. The α 4 isoform is expressed in sperm. For optimal WB detection with ATP1A2, we do not recommend boiling the sample after lysis.

Synonyms:

242414G12, alpha 2 ATPase, ATP1A 2, EC:7.2.2.13, Na(+)/K(+) ATPase alpha-2 subunit

Immunogen:

Recombinant protein

Isotype:

IgG

Subcellular location:

Membrane

Purity:

Affinity purification

Form:

Liquid

Storage Buffer:

PBS with 0.02% sodium azide, 100 μ g/ml BSA and 50% glycerol.

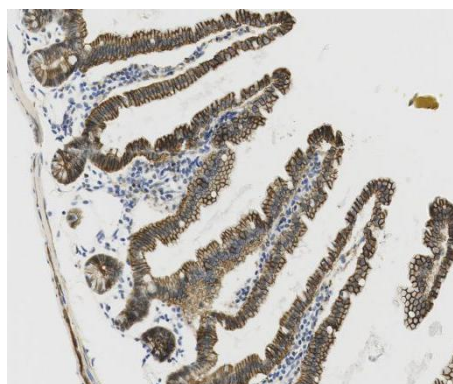
Storage:

Store at -20 °C for one year.

Experimental procedure:

Antigen retrieval: Citrate buffer (pH 9.0) , Medium high heat for 8 minutes, stop for 7 minutes, medium high heat for 8 minutes. Incubate antibody, 4°C overnight. Secondary antibody: Poly-HRP Goat Anti-Rabbit & Mouse Universal Secondary Antibody, RT, 1h.

Images:



Sample: Mouse intestine, 4% PFA 12-24h

Source of Reagents:

发表[中文论文]请标注:ATP1A2(B36260S)由杭州浩克生物技术有限公司提供;

发表[英文论文]请标注:ATP1A2(B36260S) were kindly provided by Hangzhou Haoke Biotechnology Co., Ltd.