

ATP6V1B1 Recombinant antibody

Cat: B36261S

Company: HaoKebio

Uniprot ID: P15313

Applications: IHC:1:300-1:1200

Organism: Rabbit

IHC-Polymer:1:1200-1:5000

Species reactivity: Human Mouse Rat

IHC-TSA:1:1500-1:6000

Molecular Weight Calculation: 57 kDa

IF:1:50

Observed Molecular Weight: 56 kDa

WB:1:5000-1:50000

Background:

ATP6V1B1, also named ATP6B1, VATB and VPP3, belongs to the ATPase alpha/beta chains family. ATP6V1B1 is mainly expressed in kidney. ATP6V1B1 is essential for the proper assembly and activity of V-ATPase. In renal intercalated cells, ATP6V1B1 mediates secretion of protons (H⁺) into the urine thereby ensuring correct urinary acidification. The calculated molecular weight of ATP6V1B1 is 57 kDa.

Synonyms:

V-type proton ATPase subunit B, kidney isoform, VPP3, V-ATPase subunit B 1, VATB, ATP6B1

Immunogen:

Recombinant protein

Isotype:

IgG

Subcellular location:

Cytoplasm, Membrane

Purity:

Affinity purification

Form:

Liquid

Storage Buffer:

PBS with 0.02% sodium azide, 100 µg/ml BSA and 50% glycerol.

Storage:

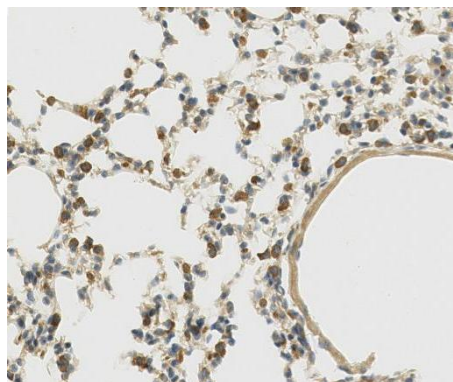
Store at -20 °C for one year.

Experimental procedure:

Antigen retrieval: Citrate buffer (pH 9.0), Medium high heat for 8 minutes, stop for 7 minutes, medium

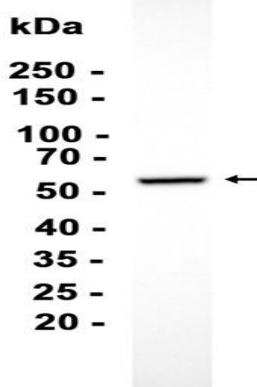
high heat for 8 minutes. Incubate antibody, 4°C overnight. Secondary antibody: Poly-HRP Goat Anti-Rabbit & Mouse Universal Secondary Antibody, RT, 1h.

Images:



Sample: Mouse lung, 4% PFA 12-24h

Rat kidney



Dilution of 1:10000 incubated at room temperature for 1.5 hours.

Source of Reagents:

发表[中文论文]请标注:ATP6V1B1(B36261S)由杭州浩克生物技术有限公司提供;

发表[英文论文]请标注:ATP6V1B1(B36261S) were kindly provided by Hangzhou Haoke Biotechnology Co., Ltd.