

## CCL20 Recombinant antibody

**Cat:** B36265S

**Company:** HaoKebio

**Uniprot ID:** P78556-1

**Applications:** IHC:1:1250-1:5000

**Organism:** Rabbit

IHC-Polymer:1:5000-1:20000

**Species reactivity:** Human Mouse

IHC-TSA:1:6000-1:25000

**Molecular Weight Calculation:** 11 kDa

IF:1:50-1:250

**Observed Molecular Weight:** 11 kDa

WB:1:5000-1:50000

### Background:

CCL20, also known as macrophage infiltrating factor protein 3 $\alpha$ , is a C-C chemokine that specifically binds to the receptor CCR6. CCL20 is produced in various tissues and by a wide range of immune cells, including neutrophils, natural killer cells, T-helper type 17 (Th17) cells, B cells, and various antigen-presenting cells, such as dendritic cells (DCs), Langerhans cells, and macrophages. Increased expression of CCL20 is likely involved in the increased recruitment of dendritic cells observed in fibroinflammatory diseases such as chronic obstructive pulmonary disease (COPD). CCL20 expression is increased by the proinflammatory cytokine IL-1 $\beta$ .

### Synonyms:

CCL20, MIP-3 Alpha, MIP-3 $\alpha$ , 241694B4, Beta-chemokine exodus-1

### Immunogen:

Recombinant protein

### Isotype:

IgG

### Subcellular location:

Cytoplasm

### Purity:

Affinity purification

### Form:

Liquid

### Storage Buffer:

PBS with 0.02% sodium azide, 100  $\mu$ g/ml BSA and 50% glycerol.

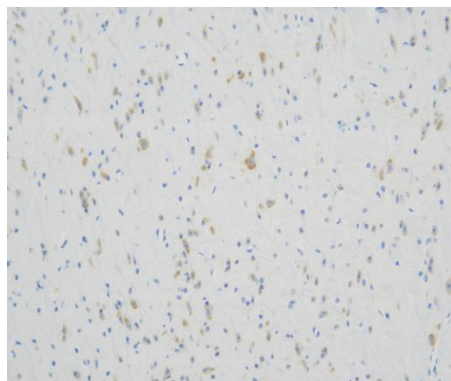
### Storage:

Store at -20 °C for one year.

### Experimental procedure:

Antigen retrieval: Citrate buffer (pH 9.0), Medium high heat for 8 minutes, stop for 7 minutes, medium high heat for 8 minutes. Incubate antibody, 4°C overnight. Secondary antibody: Poly-HRP Goat Anti-Rabbit & Mouse Universal Secondary Antibody, RT, 1h.

### Images:



Sample: Mouse brain, 4% PFA 12-24h

### Source of Reagents:

发表[中文论文]请标注:CCL20(B36265S)由杭州浩克生物技术有限公司提供;

发表[英文论文]请标注:CCL20(B36265S) were kindly provided by Hangzhou Haoke Biotechnology Co., Ltd.