

## CISD2 Recombinant antibody

**Cat:**B36273S

**Company:** HaoKebio

**Uniprot ID:**Q8N5K1

**Applications:** IHC:1:50-1:500

**Organism:**Rabbit

IHC-Polymer:1:200-1:2000

**Species reactivity:**Human Mouse

IHC-TSA:1:250-1:2500

**Molecular Weight Calculation:** 135 aa, 15 kDa

WB:1:1000-1:5000

**Observed Molecular Weight:** 15 kDa

FC:1:200-1:600

### Background:

Store at -20 °C for one year.

CISD2 gene encodes a 15 kDa CDGSH iron-sulfur domain-containing protein 2, which is also named Miner1 or NAF-1, this protein was reported on endoplasmic reticulum membrane or mitochondrion outer membrane. Defects in CISD2 are the cause of Wolfram syndrome type 2 (WFS2), a rare disorder characterized by juvenile-onset insulin-dependent diabetes mellitus with optic atrophy. CISD2 regulates autophagy program by interacting BCL2, contributing to antagonize BECN1-mediated cellular autophagy at the endoplasmic reticulum.

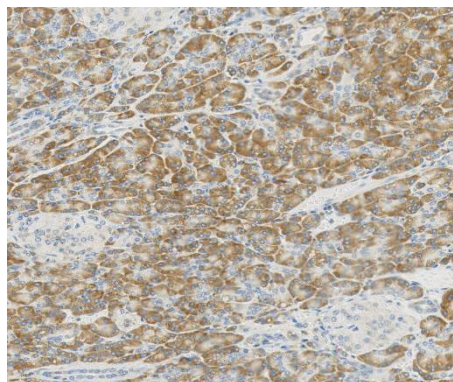
### Experimental procedure:

Antigen retrieval: Citrate buffer (pH 9.0) , Medium high heat for 8 minutes, stop for 7 minutes, medium high heat for 8 minutes. Incubate antibody, 4°C overnight. Secondary antibody: Poly-HRP Goat Anti-Rabbit & Mouse Universal Secondary Antibody, RT, 1h.

### Synonyms:

6H13, CDGSH iron sulfur domain 2, CDGSH iron-sulfur domain-containing protein 2, CDGSH2, ERIS

### Images:



Sample: Mouse kidney, 4% PFA 12-24h

### Immunogen:

Recombinant protein

### Source of Reagents:

### Isotype:

IgG

发表[中文论文]请标注:CISD2(B36273S)由杭州浩克生物技术有限公司提供;

### Subcellular location:

Cytoplasm

发表[英文论文]请标注:CISD2(B36273S) were kindly provided by Hangzhou Haoke Biotechnology Co., Ltd.

### Purity:

Affinity purification

### Form:

Liquid

### Storage Buffer:

PBS with 0.02% sodium azide, 100 µg/ml BSA and 50% glycerol.

### Storage: