

CKB-Specific Recombinant antibody

Cat: B36274S

Company: HaoKebio

Uniprot ID: P12277

Applications: IHC:1:100-1:1000

Organism: Rabbit

IHC-Polymer:1:400-1:4000

Species reactivity: Human Mouse Rat

IHC-TSA:1:500-1:5000

Molecular Weight Calculation: 43 kDa

IF:1:50

Observed Molecular Weight: 40-45 kDa

WB:1:500-1:3000

FC:1:200-1:600

Background:

CKBB, also named as B-CK and CKB, is a member of the ATP:guanido phosphotransferase protein family. It is a cytoplasmic enzyme involved in energy homeostasis. CKBB reversibly catalyzes the transfer of phosphate between ATP and various phosphogens such as creatine phosphate. It acts as a homodimer in brain as well as in other tissues, and as a heterodimer with a similar muscle isozyme in heart. CK isoenzymes play a central role in energy transduction in tissues with large, fluctuating energy demands, such as skeletal muscle, heart, brain and spermatozoa. CK MB consists of a dimer of nonidentical chains. With MM being the major form in skeletal muscle and myocardium, MB existing in myocardium, and BB existing in many tissues, especially brain.

Synonyms:

CKB, KCRB, 240418D2, B CK, B-CK

Immunogen:

Recombinant protein

Isotype:

IgG

Subcellular location:

Cytoplasm

Purity:

Affinity purification

Form:

Liquid

Storage Buffer:

PBS with 0.02% sodium azide, 100 µg/ml BSA and 50% glycerol.

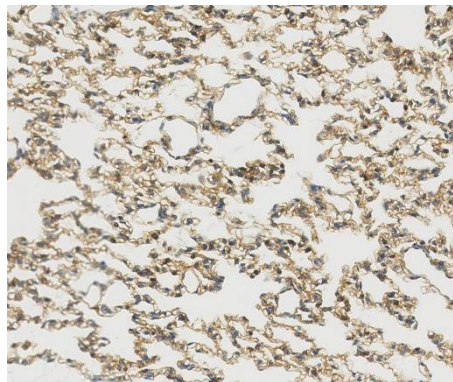
Storage:

Store at -20 °C for one year.

Experimental procedure:

Antigen retrieval: Citrate buffer (pH 9.0), Medium high heat for 8 minutes, stop for 7 minutes, medium high heat for 8 minutes. Incubate antibody, 4°C overnight. Secondary antibody: Poly-HRP Goat Anti-Rabbit & Mouse Universal Secondary Antibody, RT, 1h.

Images:



Sample: Mouse lung, 4% PFA 12-24h

Source of Reagents:

发表[中文论文]请标注:CKB-Specific(B36274S)由杭州浩克生物技术有限公司提供;

发表[英文论文]请标注:CKB-Specific(B36274S) were kindly provided by Hangzhou Haoke Biotechnology Co., Ltd.