

CPS1 Recombinant antibody

Cat:B36280S

Company: HaoKebio

Uniprot ID:P31327

Applications: IHC:1:200-1:800

Organism:Rabbit

IHC-Polymer:1:800-1:3200

Species reactivity:Human Mouse Rat

IHC-TSA:1:1000-1:4000

Molecular Weight Calculation: 165 kDa

IF:1:50

Observed Molecular Weight: 140-165 kDa

WB:1:500-1:2000

Background:

Carbamoyl phosphate synthetase 1 (CPS1) is the first rate-limiting enzyme in the urea cycle, converting ammonium into carbamoyl phosphate, and plays an intricate role in arginine metabolism and pyrimidine metabolism (PMID: 28376202). CPS1 expression is liver specific and suppressed in HCC cells and tumor tissues at the transcriptional level (PMID: 21281797). CPS1 gene comprises 38 exons that encode a polypeptide of 1500 amino acids and has a molecular weight of 165 kDa.

Synonyms:

EC:6.3.4.16, CPSase I, Carbamoyl-phosphate synthetase I, Carbamoyl-phosphate synthase [ammonia], mitochondrial, 241198F1

Immunogen:

Recombinant protein

Isotype:

IgG

Subcellular location:

Cytoplasm

Purity:

Affinity purification

Form:

Liquid

Storage Buffer:

PBS with 0.02% sodium azide, 100 µg/ml BSA and 50% glycerol.

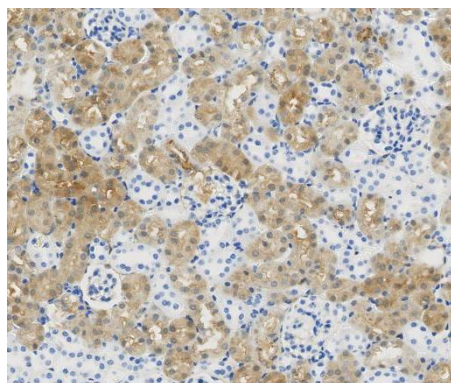
Storage:

Store at -20 °C for one year.

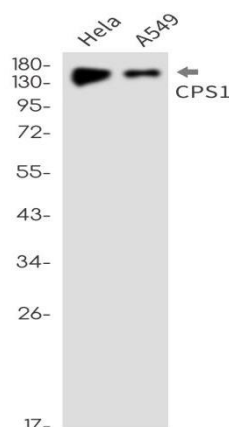
Experimental procedure:

Antigen retrieval: Citrate buffer (pH 9.0), Medium high heat for 8 minutes, stop for 7 minutes, medium high heat for 8 minutes. Incubate antibody, 4°C overnight. Secondary antibody: Poly-HRP Goat Anti-Rabbit & Mouse Universal Secondary Antibody, RT, 1h.

Images:



Sample: Mouse kidney, 4% PFA 12-24h



Dilution of 1:2000 incubated at room temperature for 1.5 hours.

Source of Reagents:

发表[中文论文]请标注:CPS1(B36280S)由杭州浩克生物技术有限公司提供;

发表[英文论文]请标注:CPS1(B36280S) were ki
ndly provided by Hangzhou Haoke Biotechnolog
y Co., Ltd.