

ENO1 Recombinant antibody

Cat: B36297S

Company: HaoKebio

Uniprot ID: P06733

Applications: IHC:1:1000-1:4000

Organism: Rabbit

IHC-Polymer:1:4000-1:16000

Species reactivity: Human Mouse Rat

IHC-TSA:1:5000-1:20000

Molecular Weight Calculation: 47 kDa

IF:1:50-1:100

Observed Molecular Weight: 47 kDa

WB:1:5000-1:50000

Background:

ENO1, also named as NNE, ENO1L1, MBPB1, MPB1 and MBP1, belongs to the enolase family.

ENO1 is a metabolic enzyme involved in the synthesis of pyruvate. It also acts as a plasminogen receptor and mediates the activation of plasmin and extracellular matrix degradation. In tumor cells, ENO1 is up-regulated and supports the Warburg effect; it is expressed at the cell surface, where it promotes cancer invasion, and is subjected to a specific array of post-translational modifications, namely acetylation, methylation and phosphorylation. ENO1 overexpression and post-translational modifications could be of diagnostic and prognostic value in many cancer types. This antibody is specific to ENO1 and has no cross-reaction with ENO2 and ENO3.

Synonyms:

ENO1L1, EC:4.2.1.11, C-myc promoter-binding protein, Alpha-enolase, 2-phospho-D-glycerate hydro-lyase

Immunogen:

Recombinant protein

Isotype:

IgG

Subcellular location:

Cytoplasm

Purity:

Affinity purification

Form:

Liquid

Storage Buffer:

PBS with 0.02% sodium azide, 100 µg/ml BSA and 50% glycerol.

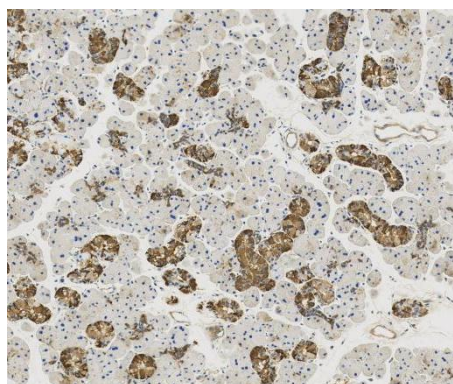
Storage:

Store at -20 °C for one year.

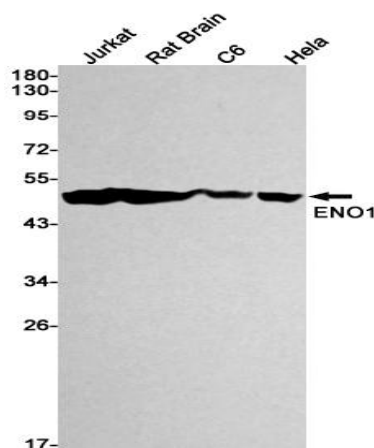
Experimental procedure:

Antigen retrieval: Citrate buffer (pH 9.0), Medium high heat for 8 minutes, stop for 7 minutes, medium high heat for 8 minutes. Incubate antibody, 4°C overnight. Secondary antibody: Poly-HRP Goat Anti-Rabbit & Mouse Universal Secondary Antibody, RT, 1h.

Images:



Sample: Mouse tumor, 4% PFA 12-24h



Dilution of 1:10000 incubated at room temperature for 1.5 hours.

Source of Reagents:

发表[中文论文]请标注:ENO1(B36297S)由杭州
浩克生物技术有限公司提供;

发表[英文论文]请标注:ENO1(B36297S) were ki
ndly provided by Hangzhou Haoke Biotechnolog
y Co., Ltd.